



2013 SCHEDULE

FEBRUARY

8	Northwestern!	W, 4-3
8	Bradley!	L, 2-1
9	Cal Poly!	W, 10-3
9	San Diego State!	W, 3-2
10	(14) Florida!	L, 14-3
15	Nebraska#	4:00 p.m.
15	Drake#	6:00 p.m.
16	Southern Utah#	4:00 p.m.
16	Purdue#	6:00 p.m.
17	Utah State#	1:00 p.m.
21	Oklahoma\$	3:30 p.m.
21	Long Beach State\$	6:00 p.m.
22	Ohio State\$	6:00 p.m.
22	Loyola Marymount\$	8:30 p.m.
23	LSU\$	5:00 p.m.

MARCH

1	UC Riverside~	4:00 p.m.
1	Boston~	6:00 p.m.
2	Boston~	4:00 p.m.
2	Portland State~	6:00 p.m.
3	Portland State~	11:00 a.m.
8	Boise State	7:00 p.m.
9	Boise State	5:00 p.m.
9	Boise State	7:00 p.m.
14	Virginia Tech^	11:00 a.m.
14	Notre Dame^	1:30 p.m.
15	Penn State^	12:30 p.m.
15	Michigan^	3:00 p.m.
16	Oklahoma^	3:00 p.m.
23	Washington*	6:00 p.m.
24	Washington*	2:00 p.m.
25	Washington*	7:00 p.m.
28	@ Utah*	6:00 p.m.
29	@ Utah*	6:00 p.m.
30	@ Utah*	12:00 p.m.

APRIL

2	California*	5:00 p.m.
2	California*	7:30 p.m.
3	California*	12:00 p.m.
6	UC Santa Barbara	6:00 p.m.
7	UC Santa Barbara	12:00 p.m.
9	@ New Mexico State	4:00 p.m.
9	@ New Mexico State	6:00 p.m.
12	@ Oregon*	5:00 p.m.
13	@ Oregon*	2:00 p.m.
14	@ Oregon*	12:00 p.m.
18	UCLA*	7:00 p.m.
19	UCLA*	5:00 p.m.
20	UCLA*	7:00 p.m.
26	@ Oregon State*	3:00 p.m.
27	@ Oregon State*	3:00 p.m.
28	@ Oregon State*	11:00 a.m.

MAY

3	Arizona State*	6:00 p.m.
4	Arizona State*	6:00 p.m.
5	Arizona State*	12:00 p.m.
9	@ Stanford*	7:00 p.m.
10	@ Stanford*	7:00 p.m.
11	@ Stanford*	12:00 p.m.

18-19	NCAA Regional	TBA
25-26	NCAA Super Regional	TBA
30-31	Women's College World Series	TBA

JUNE

1-5	Women's College World Series	TBA
-----	------------------------------	-----

Home; Neutral site; (NFCA Ranking); ! - Kajikawa Classic // Tempe, Ariz.; # - Hillenbrand Invitational // Tucson; \$ - Mary Nutter Collegiate Classic // Palm Springs, Calif.; ~ - Wildcat Invitational // Tucson; ^ - Judi Garman Classic // Fullerton, Calif.; *Pac-12 Game Times local to site

ARIZONA SOFTBALL™

WEEK 2 (FEB. 15-17): HILLENBRAND INVITATIONAL // Tucson

#16 Arizona (3-2) vs. Nebraska (5-0) // Drake (4-1) // Southern Utah (1-4) // Purdue (2-3) // Utah State (0-5)

ATHLETIC MEDIA RELATIONS // Danny Martinez // danny89@email.arizona.edu // O: 520-621-4163 // C: 520-409-1810 // F: 520-621-2681 // arizonawildcats.com

PROBABLE STARTERS

No.	Name (Bats)	Pos.	Year	Hometown (Last School)	GP/GS	Avg.	HR	RBI
3	Chelsea Suitsos (LH)	LF/DP/RS	So.	Elk Grove, Calif. (Elk Grove H.S.)	5/5	.357	0	2
5	Hallie Wilson (LH)	1B/LF	So.	Santa Ana, Calif. (Foothill H.S.)	5/5	.235	0	1
4	Brigette Del Ponte (RH)	SS	Sr.	Peoria, Ariz. (Sunrise Mountain H.S.)	5/5	.375	2	7
24	Kelsey Rodriguez (RH)	C/LF	Jr.	Scottsdale, Ariz. (Pacific)	5/5	.286	0	2
77	Chelsea Goodacre (LH)	DP/C	So.	Temecula, Calif. (Temecula Valley H.S.)	5/5	.059	1	1
9	Lauren Young (RH)	3B	Fr.	Anaheim Hills, Calif. (Canyon H.S.)	5/5	.400	0	1
6	Nancy Bowling (RH)	P/1B	Fr.	Simi Valley, Calif. (Royal H.S.)	-	-	-	-
55	Mandie Perez (LH)	2B	Fr.	Whittier, Calif. (Whittier Christian H.S.)	5/5	.133	1	1
7	Alex Lavine (RH)	CF	Jr.	Glendale, Ariz. (Mountain Ridge H.S.)	5/5	.357	0	0
18	Courtney Rodriguez (LH)	RF	Fr.	Scottsdale, Ariz. (Legacy H.S.)	4/2	.000	0	1

RESERVES

No.	Name (Bats)	Pos.	Year	Hometown (Last School)	GP/GS	Avg.	HR	RBI
00	Darcy Taylor (RH)	1B	Fr.	Jenks, Okla. (Jenks H.S.)	3/2	.286	0	3
12	Shelby Babcock (RH)	P	Jr.	Broomfield, Colo. (Legacy H.S.)	-	-	-	-
19	Kenzie Fowler (RH)	P	Sr.	Tucson, Ariz. (Canyon del Oro H.S.)	-	-	-	-
28	Gabbie Sandstedt (RH)	OF	Fr.	Glendale, Ariz. (Mountain Ridge H.S.)	1/1	.000	0	0
32	Estela Piñon (RH)	P	Jr.	Prescott, Ariz. (Yavapai College)	2/2	.400	0	0

PITCHERS

No.	Name	Pos.	Year	W-L	ERA	BAA	SO	IP
6	Nancy Bowling	RHP	Fr.	-	-	-	-	-
12	Shelby Babcock	RHP	So.	2-2	3.44	.270	18	18.1
19	Kenzie Fowler	RHP	Jr.	-	-	-	-	-
32	Estela Piñon	RHP	Jr.	1-0	4.02	.161	19	15.2

THE GAMES

Home team listed in bold // First team listed will occupy third base dugout // Game times will change based on the length of the previous game. Games will not begin before scheduled time.

Friday, Feb. 15

9:00 a.m.	Southern Utah vs. Nebraska	Hillenbrand Stadium
11:00 a.m.	Southern Utah vs. Utah State	Hillenbrand Stadium
1:00 p.m.	Purdue vs. Utah State	Hillenbrand Stadium
4:00 p.m.	ARIZONA vs. Nebraska	Hillenbrand Stadium
6:00 p.m.	ARIZONA vs. Drake	Hillenbrand Stadium
8:00 p.m.	Purdue vs. Drake	Hillenbrand Stadium

Saturday, Feb. 16

9:00 a.m.	Nebraska vs. Utah State	Hillenbrand Stadium
11:00 a.m.	Drake vs. Utah State	Hillenbrand Stadium
1:00 p.m.	Drake vs. Nebraska	Hillenbrand Stadium
4:00 p.m.	ARIZONA vs. Southern Utah	Hillenbrand Stadium
6:00 p.m.	ARIZONA vs. Purdue	Hillenbrand Stadium
8:00 p.m.	Southern Utah vs. Purdue	Hillenbrand Stadium

Sunday, Feb. 18

9:00 a.m.	Southern Utah vs. Drake	Hillenbrand Stadium
11:00 a.m.	Nebraska vs. Purdue	Hillenbrand Stadium
1:00 p.m.	ARIZONA vs. Utah State	Hillenbrand Stadium

FOLLOW THE CATS

Live Video: Arizona's games against Nebraska and Utah State will available online for free via a live stream through Pac-12.com. Use the following link to find the live stream link to the two games: <http://pac-12.com/ScheduleResults.aspx#schoolId=89&sportId=32&networkId=xos:has-video>

Live Audio: An online audio stream of the games will be available at <http://www.ustream.tv/channel/ua-athletics>

Live Stats: Find Gametracker links for all games at <http://www.arizonawildcats.com/scoreboard/>

Live Updates: Twitter: @UA_Softball (twitter.com/ua_softball) & Facebook: Arizona Athletics (facebook.com/arizonaathletics)

QUICK FACTS

GENERAL INFORMATION

LocationTucson, Ariz.
 Enrollment40,300
 NicknameWildcats
 Colors.....Cardinal and Navy
 Conference.....Pac-12
 Home Field.....Hillenbrand Stadium (2,956)
 President.....Ann Weaver Hart
 Athletics Director.....Greg Byrne
 Faculty Representative.....Jory Hancock
 SWA/Senior Assoc. A.D.Rocky LaRose

COACHING STAFF

Head Coach **Mike Candrea**
 Alma MaterArizona State '78
 Year at Arizona.....28th year
 Division I Record.....1,313-298-2 (.815)
 Record at ArizonaSame
 Phone.....(520) 621-4920
Associate Head Coach..... **Stacy Iveson**
 Alma MaterArizona '90
 Year at Arizona.....9th year (96-01, 12-13)
 Phone.....(520) 621-8208
Assistant Coach..... **Alicia Hollowell**
 Alma MaterArizona '06
 Year at Arizona.....2nd year
 Phone.....(520) 621-7527
Volunteer Assistant Coach..... **Mark Blair**
 Alma MaterUTEP '75
 Year at Arizona.....1st Year
Undergraduate Assistant Coach.. **Jessica Spigner**
 Years at Arizona.....1st year
Director of Operations **Caitlin Lowe**
 Alma MaterArizona '07
 Year at Arizona.....1st Year

2012 IN REVIEW

2012 Record.....38-19
 2012 Pac-12 finish12-12 // t4th
 2012 Postseason record3-2
 Postseason finish.....Norman Super Regional (0-2)

2013 PREVIEW

All-Pac-12 Returnees

1st TeamN/A
 2nd Team3B Brigette Del Ponte, OF Hallie Wilson
 Position Starters Returning/Lost.....3/5
 Pitchers Returning/Lost2/0
 Letterwinners returning/Lost.....7/9

COMMUNICATIONS SERVICES

Communications Services DirectorTBA
 Softball ContactsDanny Martinez
 Email.....danny89@email.arizona.edu
 Cell Phone(520) 409-1810
 Media Relations Phone.....(520) 621-4163
 Media Relations Fax.....(520) 621-2681
 Media Relations Mailing Address
 Danny Martinez
 McKale Center, Room 106
 University of Arizona
 Tucson, AZ 85721-0096
 Press Box Phone.....(520) 621-7496
 Websitearizonawildcats.com

INTERVIEW POLICY

Practice: Players and coaches are available to the media 30 minutes prior to the start of each practice. Contact Danny Martinez for practice times.

Post Game: Players and coaches are available on the field after each home game. Find Danny Martinez with interview requests. Players are available only after game two of a doubleheader.

THIS WEEK: Arizona returns home to host the Hillenbrand Invitational, a three-day, 15-game event that takes place at Hillenbrand Stadium Friday, Feb. 15 through Sunday, Feb. 17. The Wildcats welcome in Nebraska (5-0), Drake (4-1), Southern Utah (1-4), Purdue (2-3) and Utah State (0-5) to the desert. 2013 marks the 17th Hillenbrand Invitational. The Wildcats hold a 79-3 record in the 16 previous tournaments. Arizona will try to shake off a 3-2 record at the Kajikawa Classic in Tempe, Ariz., to open the season. The Wildcats were victorious over Northwestern, Cal Poly and San Diego State but fell to Bradley and 14th-ranked Florida.

SERIES HISTORY: Arizona is 79-3 in 16 years at the Hillenbrand Invitational. Arizona hosted the Hillenbrand Invitational in the stadium's second season in 1994 and every year until 2005 and again in 2006, 2008, 2009 and every year since 2011. Arizona's last loss in the Hillenbrand Invitational came in 2009 when it lost to Creighton, 6-0.

OPPONENTS:

Nebraska: The Cornhuskers (5-0) finished the Hotel Encanto Invitational in Las Cruces, N.M., with a perfect record including three victories over Illinois-Chicago and a win apiece over New Mexico State and New Mexico. Twins Tatum and Taylor Edwards lead the way with three home runs apiece and Taylor has registered 15 RBI in just five games. The Huskers possess a team batting average .397, led by Kylee Muir's .636 clip. In the circle, NU has a 1.81 team ERA, led by Emily Lockman's 1.75 figure.
Series History: Arizona 13-3 // *First Meeting:* 1983 // *Last Meeting:* 2/10/2012; Nebraska 11, Arizona 10; Tempe, Ariz. (Kajikawa Classic)

Drake: The Bulldogs' (4-1) only loss at the UNI-Dome Tournament came to the then-top-ranked Alabama Crimson Tide 8-2. Drake defeated North Dakota State, Illinois, Wisconsin-Green Bay and UNI in the tournament. The Bulldogs are led offensively by Laura Brewer, whose .556 batting average and five RBI. Drake is making its second trip to the Hillenbrand Invitational in three seasons.
Series History: 6-0 // *First Meeting:* 2000 // *Last Meeting:* 2/19/2011; Arizona 5, Drake 3; Tucson (Hillenbrand Invitational)

Southern Utah: The Thunderbirds (1-4) opened the season at the Red Desert Classic with losses to Tennessee, Utah Valley, Arkansas and Seattle before defeating Utah State. SUU has a team .231 batting average led by Kelsey Bryant's .556 figure. The Thunderbirds have a team ERA of 8.04. In 15 innings pitched, Danielle Axe holds a 3.00 ERA. Southern Utah is returning to the Hillenbrand Invitational for the second straight season.
Series History: Arizona 9-0 // *First Meeting:* 1988 // *Last Meeting:* 2/19/2012; Arizona 8, Southern Utah 0 (5 innings); Tucson (Hillenbrand Invitational)

Purdue: The Boilermakers (2-3) opened the season with wins over Hampton and Tulsa and losses to LSU, North Carolina and Tulsa at the LSU Tiger Classic. Purdue has a team 1.18 ERA and stolen 10 bases on the season. Lexy Moore leads the Boilermakers in the circle with a 0.48 ERA in 14.2 innings pitched; Purdue has four pitchers, all with an ERA under three. Ashley Burkhardt spearheads the offensive attack with a .400 batting average and three RBI.
Series History: Arizona 2-0 // *First Meeting:* 2009 // *Last Meeting:* 2/12/2010; Arizona 10, Purdue 0 (5 innings); Tempe, Ariz. (Kajikawa Classic)

Utah State: The Aggies (0-5) fell to Tennessee, Colorado State, Loyola Marymount, Southern Utah and South Dakota at the Red Desert Classic in Saint George, Utah. USU has a .145 team batting average and 4.97 ERA. Cassandra Uchida hit .500 in five games started and walked four times to post a .643 OBP. Noelle Johnson struck out 13 batters in 13 innings pitched and put up a 3.23 ERA in three appearances.
Series History: Arizona 13-8 // *First Meeting:* 1983 // *Last Meeting:* 3/4/2011; Arizona 11, Utah State 3 (6 innings); Tucson (Wildcat Invitational)

HEAD COACH MIKE CANDREA: Arizona head coach Mike Candrea is in his 28th year at the helm of the Arizona softball program with a career record of **1,313-298-2 (.815)**. A winner of eight national championships (1991, 1993, 1994, 1996, 1997, 2001, 2006, 2007), Arizona has made 22 trips to the Women's College World Series under his guidance, missing just thrice in the last 25 years (2004, 2011, 2012). In 2012, Candrea became the sport's fastest ever, and second all-time, to reach 1,300 wins. Under Candrea, Arizona has a spectacular postseason record of 151-45. An even 50 All-Americans with a staggering 90 total citations have played in the program since Candrea took over.

THE RANKINGS: Arizona fell to number 16 in the USA Today/NFCA Division I Top 25 Poll and 19 in the ESPN.com/USA Softball Collegiate Top 25. The Wildcats were ranked preseason No. 13 by the NFCA and 14 by USA Softball.

RECENT RESULTS: The Wildcats downed Northwestern, Cal Poly and San Diego State at the Kajikawa Classic in Tempe, Ariz., but fell to Bradley and Florida to post a 3-2 record at the season-opening event. Brigette Del Ponte batted .375 and hit a pair of home runs, the latter of which was a walk-off to down San Diego State 3-2 in the bottom of the seventh. The senior batted in seven on the weekend. Lauren Young and Estela Piñon hit .400 in their first weekend as Wildcats.

LAST YEAR AT THE HILLENBRAND INVITATIONAL: Arizona cruised through five games at the Hillenbrand Invitational in 2012. UA posted wins over Alabama Birmingham (7-0), North Dakota (14-2; 5 innings), Western Kentucky (6-4) and two wins over Southern Utah (9-1; 5 innings // 8-0; 5 innings). Shelby Babcock posted a 2.10 ERA in 10 innings pitched while striking out 13 batters and going 2-0. Chelsea Suitos hit .357 and scored seven runs in five starts.

QUICK HITS

Overall Record	3-2
Pac-12 Record	0-0
Home Record	0-0
Road Record	0-0
Neutral Record.....	3-2
Streak.....	L1
Last 5 Games	3-2
Last 10 Games.....	3-2
Day Record.....	3-2
Night Record	0-0

RANKINGS

USA Today/NFCA Ranking.....	16th
ESPN.com/USA Softball Ranking	19th

ACTIVE HITTING STREAKS (Season Long)

Chelsea Suitos.....	4 games (4)
Lauren Young.....	3 games (3)
Alex Lavine.....	3 games (3)
Hallie Wilson.....	3 games (3)
Brigitte Del Ponte.....	3 games (3)
Chelsea Goodacre	1 game (1)
Estela Piñon	1 game (1)

MULTIPLE HIT GAMES

Brigitte Del Ponte.....	2 games
Lauren Young.....	2 games
Chelsea Suitos.....	1 game
Alex Lavine.....	1 game
Kelsey Rodriguez.....	1 game
Estela Piñon	1 game

MULTIPLE RBI GAMES

Brigitte Del Ponte.....	2 games
Darcy Taylor	1 game

UNIFORM RECORDS (Top/Bottom)

White/White	0-0
Gray/Gray	2-0
Red/White	0-1
Blue/White	0-0
Blue/Blue	1-1

ARIZONA VS. THE CONFERENCES

America East.....	0-0
ACC	0-0
Big 10	1-0
Big-12.....	0-0
Big East.....	0-0
Big Sky	0-0
Big West	1-0
Missouri Valley.....	0-1
Mountain West.....	1-0
Pac-12.....	0-0
SEC.....	0-1
WAC.....	0-0

WHO'S HOT?

Brigitte Del Ponte: The senior hit two home runs in the Kajikawa Classic, including a walkoff solo blast against San Diego State. Del Ponte batted .375 with seven RBI and a couple of doubles while slugging .875 in the five games. The Peoria, Ariz., native had a stolen base and played excellent defense at her new position, shortstop.

Chelsea Suitos: The redshirt sophomore posted an on-base percentage of .526 to lead the team while spending the last three games of the weekend as Arizona's leadoff hitter. Suitos batted .357 with two RBI and stole four bases in four attempts.

Alex Lavine: The centerfielder had just three hits in 2012 (3-for-24) and had five in the first weekend of the season in 2013. Lavine batted .357 with a double and stole a bag in the Kajikawa Classic. The junior's biggest impact was defensively, however. Lavine played centerfield for the first time in her career and made seven putouts while covering a lot of ground in center.

Lauren Young: LY led the team in batting average in her first action as a Wildcat. The freshman batted .400 in 15 at-bats while notching an RBI in the process. Young scored two runs and walked once, giving her an OBP of .438.

Darcy Taylor: The freshman made her first two collegiate at-bats count. With two on and no one out, Taylor earned a pinch-hit appearance against Cal Poly in the sixth inning. The Jenks, Okla., native responded by lacing a double over the centerfielder's head to bring in two runs. The pinch-hit double earned Taylor a start in the next game where she tied the game with an RBI single in the second inning.

HOME SWEET HOME: Arizona will play its first home games of the season this weekend in the friendly confines of Hillenbrand Stadium. Since its opening in 1993, Arizona has put up a 563-61 record on the field. That's a .902 winning percentage at home in the last 20 years. Hillenbrand has led the nation in attendance nine times since 1994 and set the NCAA record in attendance in 2011 when 77,129 fans turned the turnstiles. UA has averaged over 2,000 fans per game for each of the last four seasons, including last year when it brought in 2,328 per game.

BANDITS: As a team, the Wildcats stole eight bases in the season opening weekend, led by Chelsea Suitos' four successful swipes. Brigitte Del Ponte, Alex Lavine, Kelsey Rodriguez and Hallie Wilson all posted one each. The eight thefts put Arizona on pace for 90 total stolen bases and Suitos on pace for 45 herself. The pace would put Suitos sixth all-time in stolen bases in a season and the team total would be the most since the 2007 club stole 101 bases.

FRESH FACES: Seven players made their Arizona debuts in Tempe: Lauren Young, Darcy Taylor, Mandie Perez, Courtney Rodriguez and Gabby Sandstedt all made their collegiate debuts while Estela Piñon and Kelsey Rodriguez made their Wildcat debuts. The seven players combined for a .262 batting average with eight RBI, a home run and three doubles. An eighth newcomer is expected to make her debut this weekend; Nancy Bowling hopes to return from a concussion which kept her out of the Kajikawa Classic.

FAMILY TIES: In 27 years, head coach Mike Candrea has never had sisters come through the program, in 2013, he has two pairs. Siblings Kelsey and Courtney Rodriguez are the first pair of sisters to ever be on the same Wildcat team. UCLA transfer Kellie Fox is the sister of former Wildcat shortstop and two-time national champion Kristie Fox (04-07).

BDP: Brigitte Del Ponte hit two home runs, batted in seven runs and registered eight assists over the weekend to improve her standing in the Arizona career top 10 in all three categories. The senior is eighth with 55 home runs, two away from Jenae Leles in sixth place. Del Ponte became just the ninth player in school history to record 200 runs batted in over the weekend and moved into ninth place in school history in the statistic. Del Ponte will need 28 RBI to catch Kristie Fox's 230 RBI in eighth place. Del Ponte is ninth with 364 assists.

NEARING THE CENTURY MARK: Kenzie Fowler has 79 career wins, eighth most in program history. With 21 wins in 2013, Fowler would become the eighth pitcher in Wildcat history to reach the 100-win milestone (Alicia Hollowell - 134, Nancy Evans - 124, Jennie Finch - 119, Carrie Dolan - 103, Becky Lemke - 103, Susie Parra - 101 and Taryne Mowatt - 100). Fowler is also on pace to become the fourth pitcher in school history to strike out one thousand batters. Her quest to 100 wins and 1,000 strikeouts will be hampered, though, by her recovery from back surgery, which will keep her out of the first month, or so, of the season.

BEARING DOWN: Estela Piñon has not allowed a hit this season with two outs. The opposition is 0-for-15 against the junior during the final out of an inning. Piñon is allowing batters that leadoff an inning to hit .375 against her, but bears down the remainder of the inning, allowing opponents to hit just .154 with runners on base.

A DIVERSE GROUP: The Wildcats' roster is full of multi-talented players that can play multiple positions. Hallie Wilson, who played centerfield last season, has already played first base and right field in 2013, making her a bona fide factotum. No Wildcat played a position she played in 2012 at the Kajikawa Classic.

UP NEXT: Arizona travels to the Mary Nutter Collegiate Classic, Feb. 21-23 in Palm Springs, Calif. to take on Oklahoma, Long Beach State, Ohio State, Loyola Marymount and LSU.

RECORD WHEN...

Total.....	3-2	Opp. scores first.....	2-1
Conference.....	0-0	After 4 leading.....	2-0
Non-Conf.....	3-2	After 4 trailing.....	0-1
Home.....	0-0	After 4 tied.....	1-1
Away.....	0-0	After 5 leading.....	2-0
Neutral.....	3-2	After 5 trailing.....	0-2
Day.....	3-2	After 5 tied.....	1-0
Night.....	0-0	After 6 leading.....	2-0
vs Left.....	1-0	After 6 trailing.....	0-2
vs Right.....	2-2	After 6 tied.....	1-0
1-Run games.....	2-1	Hit 0 home runs.....	1-1
2-Run games.....	0-0	Hit 1 home run.....	1-1
5+Run games.....	1-1	Hit 2+ home runs.....	1-0
Extra innings.....	0-0	Opp. 0 home runs.....	0-1
Shutouts.....	0-0	Opp. 1 home run.....	3-0
Scoring 0-2 runs.....	0-1	Opponent 2+ HRs.....	0-1
Scoring 3-5 runs.....	2-1	Made 0 errors.....	1-0
Scoring 6-9 runs.....	0-0	Made 1 error.....	2-0
Scoring 10+ runs.....	1-0	Made 2+ errors.....	0-2
Opponent 0-2 runs.....	1-1	Opp. made 0 errors.....	1-1
Opponent 3-5 runs.....	2-0	Opp. made 1 error.....	1-0
Opponent 6-9 runs.....	0-0	Opp. made 2+ errors.....	1-1
Opponent 10+ runs.....	0-1	Out-hit opponent.....	2-1
Scored in 1st inning.....	0-0	Out-hit by opponent.....	1-1
Scores first.....	1-1	Hits are tied.....	0-0

TEAM GAME HIGHS

Batting

At bats:	34	vs Cal Poly (Feb 09, 2013)
Runs scored:	10	vs Cal Poly (Feb 09, 2013)
Hits:	14	vs Cal Poly (Feb 09, 2013)
RBIs:	9	vs Cal Poly (Feb 09, 2013)
Doubles:	3	vs Cal Poly (Feb 09, 2013)
Home runs:	2	vs Cal Poly (Feb 09, 2013)
Total bases:	23	vs Cal Poly (Feb 09, 2013)
Walks:	5	vs Florida (Feb 10, 2013)
Strikeouts:	11	vs Northwestern (Feb 08, 2013)
Sac hits:	1	vs Bradley (Feb 08, 2013)
Sac flies:	1	vs Florida (Feb 10, 2013)
Stolen bases:	3	vs Bradley (Feb 08, 2013)
Hit by pitch:	3	vs Northwestern (Feb 08, 2013)
Runners LOB:	9	vs Northwestern (Feb 08, 2013)
Hit into DP:	1	vs Cal Poly (Feb 09, 2013)

Fielding

Putouts:	21	(4 games)
Assists:	8	vs Florida (Feb 10, 2013)
Errors:	2	vs Bradley (Feb 08, 2013)
	2	vs Florida (Feb 10, 2013)

Pitching

Innings pitched:	7.0	(4 games)
Runs allowed:	14	vs Florida (Feb 10, 2013)
Earned runs:	10	vs Florida (Feb 10, 2013)
Walks allowed:	10	vs Florida (Feb 10, 2013)
Strikeouts:	9	vs Northwestern (Feb 08, 2013)
	9	vs Cal Poly (Feb 09, 2013)
Hits allowed:	9	vs Florida (Feb 10, 2013)
Doubles allowed:	2	vs San Diego State (Feb 09, 2013)
	2	vs Florida (Feb 10, 2013)
Homers allowed:	4	vs Florida (Feb 10, 2013)
Wild pitches:	1	vs Bradley (Feb 08, 2013)
Hit batters:	2	vs Florida (Feb 10, 2013)

ARIZONA IN THE RANKINGS

Week	NFCA	USA	Week	NFCA	USA
Pre	13	14			
1	16	19			

ESPN.COM/USA SOFTBALL TOP 25

Rank	Team	Record	Totals	Last Poll
1.	Oklahoma (12)	5-0	492	2
2.	Alabama (8)	5-0	487	1
3.	Arizona State	7-0	456	4
4.	Tennessee	5-0	435	5
5.	Florida	5-0	388	15
6.	Texas	5-0	372	9
7.	Missouri	0-0	368	7
8.	California	2-2	353	3
9.	Oregon	4-2	336	6
10.	Texas A&M	4-0	299	17
11.	LSU	4-1	298	12
12.	South Florida	3-1	285	10
13.	Michigan	3-1	256	13
14.	Georgia	3-2	213	8
15.	La.-Lafayette	2-1	192	11
T16.	Louisville	4-1	175	18
T16.	Washington	4-2	175	16
18.	UCLA	3-1	162	19
19.	ARIZONA	3-2	134	14
20.	Stanford	4-2	122	20
21.	Florida State	4-0	105	24
22.	Kentucky	4-2	102	RV
23.	Hawaii	5-1	96	25
24.	Georgia Tech	5-0	47	RV
25.	Hofstra	0-0	41	T22

NUMERICAL ROSTER

No.	Name	Pos.	B/T	Ht.	Yr.	Exp.	Hometown (Last School)
00	Darcy Taylor	1B	R/R	6-0	Fr.	HS	Jenks, Okla. (Jenks H.S.)
3	Chelsea Suitsos	2B	L/R	5-5	So.*	1L	Elk Grove, Calif. (Elk Grove H.S.)
4	Brigitte Del Ponte	INF	R/R	5-3	Sr.	3L	Peoria, Ariz. (Sunrise Mountain H.S.)
5	Hallie Wilson	OF	L/L	5-5	So.	1L	Santa Ana, Calif. (Foothill H.S.)
6	Nancy Bowling	P	R/R	5-8	Fr.	HS	Simi Valley, Calif. (Royal H.S.)
7	Alex Lavine	UT	R/R	5-4	Jr.	2L	Glendale, Ariz. (Mountain Ridge H.S.)
9	Lauren Young	INF	R/R	5-7	Fr.	HS	Anaheim Hills, Calif. (Canyon H.S.)
12	Shelby Babcock	P	R/R	5-10	Jr.	2L	Broomfield, Colo. (Legacy H.S.)
18	Courtney Rodriguez	UT	L/R	5-6	Fr.	HS	Scottsdale, Ariz. (Seton Catholic Prep)
19	Kenzie Fowler	P	R/R	5-11	Sr.	3L	Tucson, Ariz. (Canyon del Oro H.S.)
24	Kelsey Rodriguez	C	R/R	5-6	Jr.	TR	Scottsdale, Ariz. (Pacific)
28	Gabby Sandstedt	OF	L/L	5-5	Fr.	HS	Glendale, Ariz. (Independence H.S.)
29	Kellie Fox	SS	R/R	5-10	Jr.	TR	San Diego, Calif. (UCLA)
32	Estela Piñon	P	R/R	5-10	Jr.	TR	Tucson, Ariz. (Yavapai College)
55	Mandie Perez	2B	L/R	5-2	Fr.	HS	Whittier, Calif. (Whittier Christian H.S.)
77	Chelsea Goodacre	C	L/R	5-4	So.	1L	Temecula, Calif. (Temecula Valley H.S.)

*Has used redshirt year

COACHES

Head Coach – Mike Candrea
 Assistant Coaches – Stacy Iveson and Alicia Hollowell
 Volunteer Assistant Coach – Mark Blair
 Undergraduate Assistant Coach – Jessica Spigner
 Director of Operations – Caitlin Lowe
 Managers – Brandon Young, James Nardi and Ariana Isom

PRONUNCIATION GUIDE

Chelsea Suitsos:	SWEE-tose
Brigitte Del Ponte:	Del PON-tee
Hallie Wilson:	HAL-lee
Alex Lavine:	Luh-VEEN
Gabby Sandstedt:	SAND-stett
Estela Piñon:	Eh-STELL-uh Peen-YONE
Stacy Iveson:	IVE-sun
Jessica Spigner:	SPIGE-nerr

PRESEASON PAC-12 COACHES POLL

Team	Pac-12	Overall
1. Arizona State	0-0	7-0
2. Stanford	0-0	4-2
Oregon	0-0	4-2
Washington	0-0	4-2
5. UCLA	0-0	3-1
6. ARIZONA	0-0	3-2
7. Oregon State	0-0	3-3
8. California	0-0	2-2
9. Utah	0-0	2-3

USA TODAY/NFCA TOP 25

Rank	Team	Record	Totals	Last Poll
1	Alabama (21)	5-0	763	1
2	Oklahoma (10)	5-0	754	2
3	Arizona State	7-0	710	4
4	Tennessee	5-0	668	6
5	Florida	5-0	610	14
6	Texas	5-0	604	7
7	Oregon	4-2	574	5
8	Missouri	0-0	557	8
9	California	2-2	532	3
10	LSU	4-1	516	10
11	Texas A&M	4-0	439	17
12	South Florida	3-1	433	12
13	Georgia	3-2	360	9
14	Michigan	3-1	352	15
15	La.-Lafayette	2-1	335	11
16	ARIZONA	3-2	285	13
17	Louisville	4-1	269	18
18	Washington	4-2	263	16
19	UCLA	3-1	224	19
20	Hawaii	5-1	193	23
21	Hofstra	0-0	167	20
22	Stanford	4-2	147	21
23	North Carolina	3-2	93	22
24	Kentucky	4-2	79	N/A
25	Florida State	4-0	74	25

HITS, SEASON

No. Player	H	Year
1. Alison McCutcheon	132	1997
2. Amy Chellevoid	122	1994
3. Alison McCutcheon	117	1998
4. Amy Chellevoid	112	1995
5. Lauren Bauer	104	2001
Brittany Lastrapes	104	2009
7. Leah O'Brien	101	1995
Laura Espinoza	101	1995
9. Caitlin Lowe	100	2005
10. Leah O'Brien	99	1997
L. Young, B. Del Ponte	6	2013

HITS, CAREER

No. Player	H	Years
1. Alison McCutcheon	405	95-98
2. Amy Chellevoid	371	92-95
3. Nicole Giordano	359	98-01
4. Caitlin Lowe	351	04-07
5. Lauren Bauer	349	98-01
6. Leah O'Brien	338	93-97
7. Brittany Lastrapes	337	08-11
8. Autumn Champion	314	03-06
9. Leah Braatz	297	94-98
10. Toni Mascarenas	293	98-01
Brigette Del Ponte	186	10-

DOUBLES, SEASON

No. Player	2B	Year
1. Brigette Del Ponte	23	2011
2. Leah O'Brien	21	1995
Lovieanne Jung	21	2003
4. K'Lee Arredondo	19	2008
Brittany Lastrapes	19	2009
6. Jenny Dalton	18	1994
7. Leticia Pineda	17	1996
Toni Mascarenas	17	1998
Toni Mascarenas	17	2000
Brittany Lastrapes	17	2010
Brittany Lastrapes	17	2011
Brigette Del Ponte	2	2013

DOUBLES, CAREER

No. Player	2B	Years
1. Brittany Lastrapes	66	08-11
2. Leah Braatz	59	94-98
3. Toni Mascarenas	55	98-01
4. Leah O'Brien	53	93-97
5. Laura Espinoza	52	92-95
7. Jenny Dalton	51	93-96
Nancy Evans	51	94-98
9. Alison McCutcheon	49	95-98
10. M. Vandergeest	48	01-04
Brigette Del Ponte	47	10-

TRIPLES, SEASON

No. Player	3B	Year
1. Julie Winkleplek	13	1979
2. Jamie Heggen	9	1992
3. Regina Rawson	6	1979
Jamie Wheat	6	1987
Alison McCutcheon	6	1995
Alison McCutcheon	6	1996
Andrea Doty	6	1996
8. Gail Davenport	5	1977
Rocky LaRose	5	1979
Jamie Heggen	5	1991
Jody Miller	5	1991
Julie Jones	5	1991
Alison McCutcheon	5	1997
Alison McCutcheon	5	1998
Nicole Giordano	5	1998
N/A		

TRIPLES, CAREER

No. Player	3B	Years
1. Alison McCutcheon	22	95-98
2. Jamie Heggen	18	91-92
3. Julie Winkleplek	17	79-81
4. Caitlin Lowe	12	04-07
5. Gail Davenport	10	76-79
Regina Rawson	10	79-82
Dee Dinota	10	81-84
8. Barb Garcia	9	78-81
Jody Pruitt	9	90-93
Amy Chellevoid	9	92-95
Brigette Del Ponte	2	10-

HOME RUNS, SEASON

No. Player	HR	Year
1. Laura Espinoza rh	37	1995
2. Stacie Chambers lh	31	2009
3. Laura Espinoza rh	30	1994
4. Jenny Dalton rh	28	1995
5. Jenny Dalton rh	25	1996
Leah Braatz rh	25	1998
Toni Mascarenas rh	25	2001
Lovieanne Jung rh	25	2003
9. Jenae Leles rh	23	2009
10. Leah Braatz rh	21	1995
Leah Braatz rh	21	1997
Leneah Manuma lh	21	2002
Stacie Chambers lh	21	2010
Brigette Del Ponte rh	21	2010
Brigette Del Ponte rh	2	2013

HOME RUNS, CAREER

No. Player	HR	Years
1. Stacie Chambers lh	87	08-11
2. Laura Espinoza rh	85	92-95
Leah Braatz rh	85	94-98
4. Jenny Dalton rh	76	93-96
Lini Koria rh	61	09-12
6. M. Vandergeest rh	59	01-04
7. Jenae Leles rh	57	06-09
8. BRIGETTE DEL PONTE RH	53	10-
Leticia Pineda rh	52	95-98
Jackie Coburn rh	52	02-05
Chelsea Goodacre	9	12-

RUNS BATTED IN, SEASON

No. Player	RBI	Year
1. Laura Espinoza	128	1995
2. Jenny Dalton	109	1996
3. Leah Braatz	100	1998
4. Jenny Dalton	98	1995
5. Leticia Pineda	96	1996
Stacie Chambers	96	2009
7. Laura Espinoza	95	1994
8. Jenny Dalton	91	1994
9. Toni Mascarenas	84	2001
10. Brigette Del Ponte	80	2010
Brigette Del Ponte	7	2013

RUNS BATTED IN, CAREER

No. Player	RBI	Years
1. Jenny Dalton	328	93-96
2. Leah Braatz	322	94-98
3. Laura Espinoza	314	92-95
4. Stacie Chambers	293	08-11
5. M. Vandergeest	248	01-04
6. Toni Mascarenas	245	98-01
7. Leticia Pineda	240	95-98
8. Kristie Fox	230	04-07
9. BRIGETTE DEL PONTE	202	10-
10. Brittany Lastrapes	199	08-11
Hallie Wilson	29	12-

STOLEN BASES, SEASON

No. Player	SB/A	Year
1. A. McCutcheon	67-70	1998
2. Vivian Holm	49-53	1987
Caitlin Lowe	49-50	2007
4. A. McCutcheon	47-50	1997
Caitlin Lowe	47-50	2004
6. Lauren Bauer	43-45	1999
7. Vivian Holm	41-45	1990
Lauren Bauer	38-40	2000
Lauren Bauer	38-44	2001
10. Caitlin Lowe	33-35	2006
Chelsea Suitsos	4-4	2013

STOLEN BASES, CAREER

No. Player	SB	Years
1. Caitlin Lowe	156	04-07
2. A. McCutcheon	148	95-98
3. Lauren Bauer	133	98-01
4. Vivian Holm	129	87-90
5. Amy Chellevoid	113	92-95
6. Nicole Giordano	81	98-01
7. Toni Mascarenas	58	98-01
8. Julie Standerling	57	88-91
9. Autumn Champion	54	03-05
10. Kristin Gauthier	52	88-91
Brigette Del Ponte	21	10-

WALKS, SEASON

No. Player	BB	Year
1. Jenny Dalton	64	1996
2. Stacie Chambers	62	2010
3. Jenny Dalton	59	1995
4. Lovieanne Jung	55	2003
5. Leah Braatz	53	1998
6. Leah Braatz	45	1997
7. Leah Braatz	44	1995
Lovieanne Jung	44	2002
9. Leneah Manuma	41	2002
Jenae Leles	41	2009
Del Ponte, Suitsos, Wilson	3	2013

WALKS, CAREER

No. Player	BB	Years
1. Jenny Dalton	178	93-96
2. Leah Braatz	173	94-98
3. Stacie Chambers	158	08-11
8. Brittany Lastrapes	137	08-11
5. Jenae Leles	132	06-09
6. Lini Koria	120	09-12
7. M. Vandergeest	116	01-04
8. Nancy Evans	112	94-98
9. Toni Mascarenas	111	98-01
10. Jennie Finch	105	99-02
Brigette Del Ponte	80	10-

VICTORIES, SEASON

No. Player	W-L	Year
1. Taryne Mowatt	42-12	2007
2. Alicia Hollowell	41-4	2004
3. Alicia Hollowell	40-5	2003
4. Kenzie Fowler	38-9	2010
5. Nancy Evans	36-2	1997
Nancy Evans	36-2	1998
7. Carrie Dolan	35-6	1996
8. Jennie Finch	34-6	2002
9. Susie Parra	33-1	1994
Carrie Dolan	33-2	1995
11. Jennie Finch	32-0	2001
Alicia Hollowell	32-5	2006
Debby Day	32-5	1992
Teresa Cherry	32-11	1988
15. Nancy Evans	31-4	1995
Alicia Hollowell	31-9	2005
17. Becky Lemke	30-7	2000
Debby Day	30-8	1991
Shelby Babcock	2-1	2013

VICTORIES, CAREER

No. Player	W-L	Years
1. Alicia Hollowell	134-23	03-06
2. Nancy Evans	124-8	94-98
3. Jennie Finch	119-16	99-02
4. Carrie Dolan	103-13	94-97
5. Becky Lemke	103-19	98-01
6. Susie Parra	101-9	91-94
7. Taryne Mowatt	100-33	05-08
8. Kenzie Fowler	79-27	10-
9. Teresa Cherry	71-33	85-88
10. Debby Day	62-13	91-92
Shelby Babcock	40-18	11-

STRIKEOUTS, SEASON

No. Player	SO	Year
1. Taryne Mowatt	522	2007
2. Alicia Hollowell	508	2004
3. Alicia Hollowell	446	2003
4. Alicia Hollowell	420	2006
5. Taryne Mowatt	413	2008
6. Alicia Hollowell	394	2003
7. Kenzie Fowler	371	2010
8. Jennie Finch	366	2002
9. Becky Lemke	314	2000
10. Jennie Finch	279	2001
Estela Piñon	19	2013

STRIKEOUTS, CAREER

No. Player	SO	Years
1. Alicia Hollowell	1768	03-06
2. Taryne Mowatt	1267	05-08
3. Jennie Finch	1028	99-01
4. Becky Lemke	916	98-01
5. Susie Parra	874	91-94
6. Kenzie Fowler	794	10-
7. Nancy Evans	733	94-98
8. Jenny Gladding	358	01-02
9. Pam Stone	343	82-84
10. Debby Day	334	91-92
Shelby Babcock	299	11-

INNINGS PITCHED, SEASON

No. Player	IP	Year
1. Taryne Mowatt	370.0	2007
2. Teresa Cherry	301.1	1988
3. Alicia Hollowell	297.0	2003
4. Alicia Hollowell	293.2	2004
5. Taryne Mowatt	285.2	2008
6. Kenzie Fowler	284.1	2010
7. Alicia Hollowell	279.0	2005
8. Jennie Finch	273.1	2002
9. Debby Day	268.1	1991
10. Carrie Dolan	264.0	1996
Shelby Babcock	18.1	2013

INNINGS PITCHED, CAREER

No. Player	IP	Years
1. Alicia Hollowell	1122.0	03-06
2. Taryne Mowatt	877.2	05-08
3. Jennie Finch	876.2	99-02
4. Nancy Evans	835.2	94-98
5. Becky Lemke	781.0	98-01
6. Susie Parra	780.0	91-94
7. Carrie Dolan	755.3	94-97
8. Teresa Cherry	730.1	85-88
9. Kenzie Fowler	652.1	10-
10. Jo Loganecker	534.0	79-82
Shelby Babcock	386.0	11-

SEASON SHUTOUTS (Solo/combined)

No. Player	Shutouts	Year
1. Alicia Hollowell	22/3	2003
2. Debby Day	22/0	1992
3. Alicia Hollowell	21/3	2004
4. Jennie Finch	21/1	2002
5. Alicia Hollowell	20/0	2006
6. Nancy Evans	20/1	1998
7. Taryne Mowatt	19/1	2007
8. Debby Day	19/1	1991
9. Jennie Finch	19/1	2001
10. Susie Parra	19/0	1992
N/A		

PLAYER AWARDS, by player

SHELBY BABCOCK

2012

Pac-12 Pitcher of the Week (4/9-4/15)

2011

Pac-10 All-Freshman

BRIGETTE DEL PONTE

2013

USA Softball Player of the Year Watchlist (50 Players)

2012

All-Pac-12 (Second Team)

Pac-12 Player of the Week (2/20-2/26)

USA Softball Player of the Year Watchlist (50 Players)

2011

NFCA All-American (Second Team)

USA Softball National Team Selection Camp Invitee

NFCA All-West Region (First Team)

All-Pac-10 (First Team)

Pac-10 Player of the Week (3/21-3/27)

2010

All-Pac-10 (Second Team)

Pac-10 All-Freshman

NFCA All-West Region (Second Team)

Pac-10 Player of the Week (3/1-3/7)

KENZIE FOWLER

2012

USA Softball Player of the Year Watchlist (50 Players)

2011

NFCA All-American (Second Team)

Pac-10 All-Academic (Honorable Mention)

NFCA All-West Region (First Team)

All-Pac-10 (Second Team)

USA Softball Player of the Year Finalist (25 Players)

USA Softball Player of the Week (3/28-4/3)

Pac-10 Player of the Week (3/28-4/3)

USA Softball Player of the Year Watchlist (50 Players)

ESPN Preseason All-American

2010

NFCA All-American (First Team)

All-WCWS

All-Pac-10 (First Team)

Pac-10 All-Freshman

NFCA All-West Region (First Team)

NFCA Player of the Week (3/8-3/15)

Pac-10 Pitcher of the Week (3/8-3/15)

USA Softball Player of the Week (4/15-4/22)

Pac-10 Pitcher of the Week (4/15-4/22)

USA Softball Player of the Year Finalist (10 Players)

USA Softball Player of the Year Finalist (25 Players)

CHELSEA GOODACRE

2012

Pac-12 All-Freshman (Honorable Mention)

ALEX LAVINE

2011

Pac-10 All-Freshman (Honorable Mention)

CHELSEA SUITOS

2012

Pac-12 All-Freshman (Honorable Mention)

HALLIE WILSON

2012

All-Pac-12 (Second Team)

Pac-12 All-Freshman

RECENTLY RELEASED

ARIZONA PICKED FIFTH BY PAC-12 COACHES IN PRESEASON POLL

In a vote of the conference's coaches, Arizona was selected fifth in the Pac-12 Preseason Coaches Poll. Arizona received 32 votes during the process.

Defending conference champion California was picked to finish first, receiving seven of the eight first-place votes. Arizona State was slated second, receiving a first-place vote of its own.

Oregon was picked to finish third, while Washington was selected fourth.

TWO CATS NAMED TO USA SOFTBALL PLAYER OF THE YEAR "WATCH LIST"

Two Wildcats were named to the 2013 USA Softball Collegiate Player of the Year "Watch List", the Amateur Softball Association (ASA) announced Friday. Sophomore Hallie Wilson and senior Brigette Del Ponte were two of 50 players to receive the honor.

This marks the second consecutive season Del Ponte has received this recognition. Wilson's citation is her first such, as it is her first year eligible to be placed on the "Watch List".

In just three seasons, Del Ponte, a shortstop from Peoria, Ariz., has already hit herself into the Arizona record books and sits in the top 10 in career home runs (8th - 53), RBI (10th - 195) and assists (9th - 356) and sits just outside top 10 in doubles (11th - 45). The senior possesses a career .328 batting average to go along with a .708 slugging percentage and .417 career on-base percentage.

In her freshman campaign, Wilson, a first baseman and centerfielder from Santa Ana, Calif., led the team in batting average with a .346 clip, making her the first freshman since Brittany Lastrapes in 2008 to lead the squad in batting average. The sophomore knocked 12 doubles, a pair of home runs and drove in 28 runs while spending most of the season as the team's leadoff hitter.

ESPN.COM/USA SOFTBALL PRESEASON POLL PUTS UA 14TH

University of Arizona Wildcat Softball is ranked 14th in ESPN.com/USA Softball Collegiate Top 25 Pre-season Poll, released Tuesday. UA finished 13th in 2012 rankings.

The ESPN.com/USA Softball poll is the second softball top 25 to be announced. Arizona was tabbed 13th in the USA Today/NFCA Division I Top 25 Pre-season Poll, released last week.

Defending champion Alabama received the top spot in the preseason poll, receiving 13-of-20 first-place votes. The remaining seven went to 2012 runner-up Oklahoma. California, Arizona State and Tennessee round out the top five.

SOFTBALL TABBED AS PRESEASON NO. 13 BY NFCA

University of Arizona Wildcat Softball was tabbed No. 13 in the USA Today/NFCA Division I Top 25 Pre-season Poll, released Tuesday.

Arizona will begin the season where it ended last season - ranked 13th.

Defending champion Alabama is ranked No. 1 and received 25 of the 31 first-place votes. 2012 runner-up Oklahoma received five first-place votes and is preseason No. 2.

PLAYER AWARDS, by player (cont.)

HEAD COACH MIKE CANDREA

2011 U.S. Olympic Achievement Award

2009 Central Arizona College Hall of Fame

2008 Silver medalist, U.S. Softball Team head coach, Beijing Olympics

2007 Pac-10 Coach of the Year

2007 NFCA Coaching Staff of the Year

2004 USOC Olympic Shield award

2004 USOC Coach of the Year

2004 Gold medalist, U.S. Softball Team head coach, Athens Olympics

2003 Pac-10 Coach of the Year

2002 Pac-10 Coach of the Year

2001 Pac-10 Coach of the Year

2000 Pac-10 Coach of the Year

1999 University of Arizona Honorary Alumnus Degree

1998 Pac-10 Coach of the Year

1997 NFCA Division I Coach of the Year

1997 Pacific Region Coach of the Year

1997 Pac-10 Coach of the Year

1996 NFCA Division I Coach of the Year

1996 NFCA Hall of Fame election

1995 Pacific Region Coach of the Year

1994 NSCA Division I Coach of the Year

1994 Pacific Region Coach of the Year

1994 Pac-10 Coach of the Year

1988 Northwest Region Coach of the Year

1986 Pacific-West Co-Coach of the Year

1985 NJCAA Coach of the Year

1984 NJCAA Coach of the Year

SHELBY BABCOCK - #12



5-10, Junior, 2L
Pitcher
Bats – R, Throws – R
Hometown: Broomfield, Colo.

Season Highs:
Innings pitched: 7.0, twice, last vs San Diego State, Feb 09
Runs allowed: 7, vs Florida, Feb 10
Walks allowed: 7, vs Florida, Feb 10
Strikeouts: 9, vs Northwestern, Feb 08

Career Highs:
Innings pitched: 7.0, 22 times
Runs allowed: 13, at Arizona State, Apr 22
Walks allowed: 9, twice, last at UCLA, May 05, 2012
Strikeouts: 9, 3 times, last vs Northwestern, Feb 08

NANCY BOWLING - #6



5-8, Freshman, HS
Pitcher
Bats – R, Throws – R
Hometown: Simi Valley, Calif.

Season Highs:
Innings pitched: N/A
Walks allowed: N/A
Strikeouts: N/A
Batters faced: N/A

Career Highs:
Innings pitched: *Same*
Walks allowed: *Same*
Strikeouts: *Same*
Batters faced: *Same*

BRIGETTE DEL PONTE - #4



5-3, Senior, 3L
Infield
Bats – R, Throws – R
Hometown: Peoria, Ariz.

Season Highs:
Hits: 2, twice, last vs San Diego State, Feb 09
Doubles: 1, twice, last vs Florida, Feb 10
Home runs: 1, twice, last vs San Diego State, Feb 09
Total bases: 5, vs Cal Poly, Feb 09
RBI: 4, vs Cal Poly, Feb 09
Runs scored: 1, twice, last vs San Diego State, Feb 09
Stolen bases: 1, vs Bradley, Feb 08

Career Highs:
Hits: 4, at Notre Dame, May 19, 2012
Doubles: 3, Col. of Charleston, Mar 03, 2012
Home runs: 2, 4 times
Total bases: 8, 4 times
RBI: 7, at California, Apr 30, 2010
Runs scored: 3, 4 times
Stolen bases: 2, North Dakota State, May 18, 2012

KENZIE FOWLER - #19

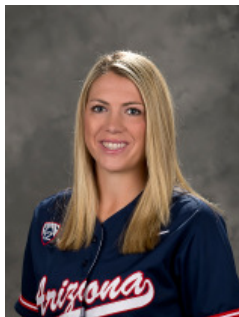


5-11, Junior, 2L
Pitcher
Bats – R, Throws – R
Hometown: Tucson, Ariz.

Season Highs:
Innings pitched: N/A
Walks allowed: N/A
Strikeouts: N/A
Batters faced: N/A

Career Highs:
Innings pitched: 11.1, Hofstra, May 23, 2010
Walks allowed: 9, at Arizona State, Apr 01, 2010 ; Hofstra, May 23, 2010
Strikeouts: 18, vs Northwestern, Feb 13, 2010
Batters faced: 57, Hofstra, May 23, 2010

KELLIE FOX - #29



5-10, Junior, TR
Shortstop
Bats – R, Throws – R
Hometown: San Diego, Calif.

-- Must sit out 2013 due to NCAA transfer rules --

CHELSEA GOODACRE - #77



5-4, Sophomore, 1L
Catcher
Bats – L, Throws – R
Hometown: Temecula, Calif.

Season Highs:
Hits: 1, vs Florida, Feb 10
Doubles: N/A
Home runs: 1, vs Florida, Feb 10
Total bases: 4, vs Florida, Feb 10
RBI: 1, vs Florida, Feb 10
Runs scored: 1, 3 times, last vs Florida, Feb 10

Career Highs:
Hits: 3, at California, Apr 14, 2012
Doubles: 1, 5 times
Home runs: 2, twice, last vs Notre Dame, May 20, 2012
Total bases: 8, twice, last vs Notre Dame, May 20, 2012
RBI: 3, vs Oklahoma State, Feb 24, 2012
Runs scored: 2, 3 times, last vs Notre Dame, May 20, 2012

ALEX LAVINE - #7



5-4, Junior, 2L
Centerfield
Bats – L, Throws – R
Hometown: Glendale, Ariz.

Season Highs:
Hits: 2, vs Cal Poly, Feb 09
Doubles: 1, vs Bradley, Feb 08
Home runs: N/A
Total bases: 2, twice, last vs Cal Poly, Feb 09
RBI: N/A
Runs scored: 1, vs Cal Poly, Feb 09

Career Highs:
Hits: 2, 7 times
Doubles: 1, 4 times
Home runs: 1, 4 times
Total bases: 7, vs San Jose State, Mar 19, 2011
RBI: 3, twice, last vs San Diego State, Mar 28, 2012
Runs scored: 2, at Stanford, Apr 02, 2011 ; vs San Jose State, Mar 19, 2011
Stolen bases: 1, 3 times, last vs Northwestern, Feb 08, 2013

MANDIE PEREZ - #55



5-2, Freshman, HS
Utility
Bats – L, Throws – R
Hometown: Whittier, Calif.

Season Highs:
Hits: 1, twice, last vs Cal Poly, Feb 09
Doubles: N/A
Home runs: 1, vs Cal Poly, Feb 09
Total bases: 4, vs Cal Poly, Feb 09
RBI: 1, vs Cal Poly, Feb 09
Runs scored: 1, twice, last vs Cal Poly, Feb 09

Career Highs:
Hits: *Same*
Doubles: *Same*
Home runs: *Same*
Total bases: *Same*
RBI: *Same*
Runs scored: *Same*

ESTELA PINON - #32



5-10, Junior, TR
Pitcher
Bats – R, Throws – R
Hometown: Tucson, Ariz.

Season Highs:
(Pitching)
Innings pitched: 7.0, vs Cal Poly, Feb 09
Runs allowed: 7, vs Florida, Feb 10
Walks allowed: 5, vs Cal Poly, Feb 09
Strikeouts: 9, vs Cal Poly, Feb 09
(Batting)
Hits: 2, vs Cal Poly, Feb 09
Doubles: 1, vs Cal Poly, Feb 09
Home runs: N/A
Total bases: 3, vs Cal Poly, Feb 09
RBI: N/A
Runs scored: 2, vs Cal Poly, Feb 09

Arizona Career Highs:
All: Same

COURTNEY RODRIGUEZ - #18



5-6, Freshman, HS
Outfield
Bats – L, Throws – R
Hometown: Scottsdale, Ariz.

Season Highs:
Hits: N/A
Doubles: N/A
Home runs: N/A
Total bases: N/A
RBI: N/A
Runs scored: 1, vs Northwestern, Feb 08
Stolen bases: N/A

Career Highs:
Hits: Same
Doubles: Same
Home runs: Same
Total bases: Same
RBI: Same
Runs scored: Same
Stolen bases: Same

KESLEY RODRIGUEZ - #24



5-6, Junior, TR
Catcher
Bats – R, Throws – R
Hometown: Scottsdale, Ariz.

Season Highs:
Hits: 2, vs San Diego State, Feb 09
Doubles: 1, vs Cal Poly, Feb 09
Home runs: N/A
Total bases: 2, twice, last vs San Diego State, Feb 09
RBI: 1, twice, last vs Florida, Feb 10
Runs scored: 1, vs Northwestern, Feb 08
Stolen bases: 1, vs San Diego State, Feb 09

Arizona Career Highs:
Hits: Same
Doubles: Same
Home runs: Same
Total bases: Same
RBI: Same
Runs scored: Same
Stolen bases: Same

GABBIE SANDSTEDT - #28



5-5, Freshman, HS
Outfield
Bats – R, Throws – R
Hometown: Glendale, Ariz.

Season Highs:
Hits: N/A
Doubles: N/A
Home runs: N/A
Total bases: N/A
RBI: N/A
Runs scored: N/A
Stolen bases: N/A

Career Highs:
Hits: Same
Doubles: Same
Home runs: Same
Total bases: Same
RBI: Same
Runs scored: Same
Stolen bases: Same

CHELSEA SUITOS - #3

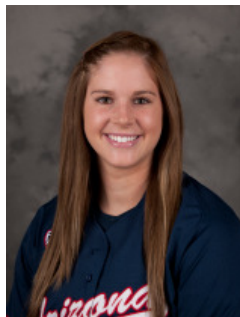


5-5, RS Sophomore, 1L
Utility
Bats – L, Throws – R
Hometown: Elk Grove, Calif.

Season Highs:
Hits: 2, vs Cal Poly, Feb 09
Doubles: N/A
Total bases: 2, vs Cal Poly, Feb 09
RBI: 1, twice, last vs Cal Poly, Feb 09
Runs scored: 1, 3 times, last vs Florida, Feb 10
Stolen bases: 2, vs Bradley, Feb 08

Career Highs:
Hits: 2, 13 times
Doubles: 1, 4 times
Total bases: 3, twice, last vs Oregon State, May 10, 2012
RBI: 2, vs UC Davis, Mar 16, 2012
Runs scored: 2, 4 times
Stolen bases: 2, twice, last vs Bradley, Feb 08

DARCY TAYLOR - #00



6-0, Freshman, HS
First Base
Bats – R, Throws – R
Hometown: Jenks, Okla.

Season Highs:
Hits: 1, twice, last vs San Diego State, Feb 09
Doubles: 1, vs Cal Poly, Feb 09
Home runs: N/A
Total bases: 2, vs Cal Poly, Feb 09
RBI: 2, vs Cal Poly, Feb 09
Runs scored: N/A

Career Highs:
Hits: Same
Doubles: Same
Home runs: Same
Total bases: Same
RBI: Same
Runs scored: Same

HALLIE WILSON - #5



5-5, Sophomore, 1L
First Base
Bats – L, Throws – L
Hometown: Santa Ana, Calif.

Season Highs:
Hits: 1, 4 times
Doubles: N/A
Home runs: N/A
Total bases: 1, 4 times
RBI: 1, vs Bradley, Feb 08
Runs scored: 2, vs Cal Poly, Feb 09

Career Highs:
Hits: 4, New Mexico State, Mar 21, 2012
Doubles: 2, twice, last vs North Dakota, Feb 17, 2012
Home runs: 1, twice, last vs New Mexico State, Mar 21, 2012
Total bases: 5, twice, last vs New Mexico State, Mar 21, 2012
RBI: 4, Southern Utah, Feb 18, 2012
Runs scored: 2, 8 times

LAUREN YOUNG - #9



5-7, Freshman, HS
Third Base
Bats – R, Throws – R
Hometown: Anaheim Hills, Calif.

Season Highs:
Hits: 2, twice, last vs San Diego State, Feb 09
Doubles: N/A
Home runs: N/A
Total bases: 2, twice, last vs San Diego State, Feb 09
RBI: 1, vs Cal Poly, Feb 09
Runs scored: 1, twice, last vs Cal Poly, Feb 09
Stolen bases: N/A

Career Highs:
Hits: Same
Doubles: Same
Home runs: Same
Total bases: Same
RBI: Same
Runs scored: Same
Stolen bases: Same

Overall:	3-2	Pac-12:	0-0	Away:	0-0
Home:	0-0	Road (inc. neutral):	3-2	Extra-Innings:	0-0
Neutral:	3-2	vs. Ranked:	0-1	Less than 7 innings:	0-0

Date	(Rank) Opponent	Score (Inn.)	Winning Pitcher	Losing Pitcher	UA/Opponent Hits	Home Attendance
2/8	vs. Northwestern!	W, 4-3	Babcock (1-0)	Letourneau (0-1)	2/5	
2/8	vs. Bradley!	L, 2-1	Lynch-Crumrine (1-0)	Babcock (1-1)	5/3	
2/9	vs. Cal Poly!	W, 10-3	Piñon (1-0)	Yates (1-2)	14/4	
2/9	vs. San Diego State!	W, 3-2	Babcock (2-1)	Arbino (3-1)	10/8	
2/10	vs. (14) Florida!	L, 14-3	Haeger (2-0)	Babcock (2-2)	6/9	
2/15	Nebraska#					
2/15	Drake#					
2/16	Southern Utah#					
2/16	Purdue#					
2/17	Utah State#					
2/21	vs. Oklahoma\$					
2/21	vs. Long Beach State\$					
2/22	vs. Ohio State\$					
2/22	vs. Loyola Marymount\$					
2/23	vs. LSU\$					
3/1	UC Riverside~					
3/1	Boston~					
3/2	Boston~					
3/2	Portland State~					
3/3	Portland State~					
3/8	Boise State					
3/9	Boise State					
3/9	Boise State					
3/14	vs. Virginia Tech^					
3/14	vs. Notre Dame^					
3/15	vs. Penn State^					
3/15	vs. Michigan^					
3/16	vs. Oklahoma^					
3/23	Washington*					
3/24	Washington*					
3/25	Washington*					
3/28	@ Utah*					
3/29	@ Utah*					
3/30	@ Utah*					
4/2	California*					
4/3	California*					
4/4	California*					
4/6	UC Santa Barbara					
4/7	UC Santa Barbara					
4/9	@ New Mexico State					
4/9	@ New Mexico State					
4/12	@ Oregon*					
4/13	@ Oregon*					
4/14	@ Oregon*					
4/18	UCLA*					
4/19	UCLA*					
4/20	UCLA*					
4/26	@ Oregon State*					
4/27	@ Oregon State*					
4/28	@ Oregon State*					
5/3	Arizona State*					
5/4	Arizona State*					
5/5	Arizona State*					
5/9	@ Stanford*					
5/10	@ Stanford*					
5/11	@ Stanford*					

(NFCA Ranking); ! - Kajikawa Classic // Tempe, Ariz.; # - Hillenbrand Invitational // Tucson; \$ - Mary Nutter Collegiate Classic // Palm Springs, Calif.; ~ - Wildcat Invitational // Tucson; ^ - Judi Garman Classic // Fullerton, Calif.; *Pac-12 Game

Total Home Attendance: N/A

Average: N/A

The Automated ScoreBook
Statistics Summary for Arizona (as of Feb 11, 2013)
(All games)

Record: 3-2 Home: 0-0 Away: 0-0 Neutral: 3-2 Conference: 0-0

Date	Opponent	Score	Player	avg	gp-gs	ab	r	h	2b	3b	hr	rbi	bb	hbp	so	sb-att
2/8	vs Bradley	L 1-2	9 Young, Lauren	.400	5-5	15	2	6	0	0	0	1	1	0	3	0-0
2/8	vs Northwestern	w 4-3	32 Pinon, Estela	.400	2-2	5	2	2	1	0	0	0	0	0	1	0-0
2/9	vs Cal Poly	w 10-3	4 Del Ponte, Briget	.375	5-5	16	2	6	2	0	2	7	3	1	2	1-1
2/9	vs San Diego State	w 3-2	3 Suitos, Chelsea	.357	5-5	14	3	5	0	0	0	2	3	2	2	4-4
2/10	vs Florida	L 3-14	7 Lavine, Alex	.357	5-5	14	1	5	1	0	0	0	0	0	5	1-1
			24 Rodriguez, Kelse	.286	5-5	14	1	4	1	0	0	2	2	0	1	1-1
			0 Taylor, Darcy	.286	3-2	7	0	2	1	0	0	3	0	0	2	0-0
			5 Wilson, Hallie	.235	5-5	17	4	4	0	0	0	1	3	0	4	1-1
			55 Perez, Mandie	.133	5-5	15	2	2	0	0	1	1	0	1	3	0-0
			77 Goodacre, Chels	.059	5-5	17	3	1	0	0	1	1	1	0	4	0-0
			18 Rodriguez, Court	.000	4-2	3	1	0	0	0	0	1	1	0	2	0-0
			28 Sandstedt, Gabb	.000	1-1	2	0	0	0	0	0	0	0	0	2	0-0
Totals				.266	5	139	21	37	6	0	4	19	14	4	31	8-8
Opponents				.223	5	130	24	29	7	0	7	21	23	3	37	3-5

LOB - Team (38), Opp (34). DPs turned - Team (0), Opp (1).

Player	era	w-l	app	gs	cg	sh	sv	ip	h	r	er	bb	so
12 Babcock, Shelby	3.44	2-2	4	3	2	0	0	18.1	20	13	9	11	18
32 Pinon, Estela	4.02	1-0	3	2	1	0	0	15.2	9	11	9	12	19
Totals	3.71	3-2	5	5	3	0	0	34.0	29	24	18	23	37
Opponents	3.36	2-3	5	5	2	0	0	33.1	37	21	16	14	31

PB - Team (0), Opp (1). SBA/ATT - Rodriguez, K (3-5), Babcock (2-3), Pinon (1-2).

Score by innings	1	2	3	4	5	6	7	Total
Arizona	0	1	3	6	4	5	2	21
Opponents	5	2	2	0	5	4	6	24

Win-loss breakouts: Day 3-2; Night 0-0; vs Left 1-0; vs Right 2-2;
 1-run games 2-1; 2-run games 0-0; 5+run games 1-1; Extra inns 0-0; Shutouts 0-0.
 Current streak: Lost 1; Longest winning streak: 3; Longest losing streak: 1.
 Attendance: Home 0 (avg 0); Away 1771 (avg 354); Total 1771 (avg 354).

2013 Arizona Softball
Team Game-by-Game for Arizona (as of Feb 13, 2013)
Batting (All games)

Date	Opponent	ab	r	h	rbi	2b	3b	hr	bb	ibb	sb	cs	hbp	sac	sf	gdp	k	po	a	e	avg
Feb 08	vs Bradley	26	1	5	1	2	0	0	2	0	3	0	1	1	0	0	5	18	7	2	.192
Feb 08	vs Northwestern	24	4	2	3	0	0	0	4	0	2	0	3	0	0	0	11	21	5	1	.140
Feb 09	vs Cal Poly	34	10	14	9	3	0	2	2	0	2	0	0	0	0	1	3	21	6	1	.250
Feb 09	vs San Diego State	29	3	10	3	0	0	1	1	0	1	0	0	0	0	0	7	21	7	0	.274
Feb 10	vs Florida	26	3	6	3	1	0	1	5	0	0	0	0	0	1	0	5	21	8	2	.266
Totals		139	21	37	19	6	0	4	14	0	8	0	4	1	1	1	31	102	33	6	.266

2013 Arizona Softball
Team Game-by-Game for Arizona (as of Feb 13, 2013)
Pitching (All games)

Date	Opponent	ip	h	r	er	bb	so	2b	3b	hr	wp	bk	hbp	dp	ibb	score	w-l	sv	era
Feb 08	vs Bradley	6.0	3	2	2	5	8	1	0	0	1	0	0	0	0	1-2	0-1	0	2.33
Feb 08	vs Northwestern	7.0	5	3	2	1	9	1	0	1	0	0	0	0	0	4-3	1-1	0	2.15
Feb 09	vs Cal Poly	7.0	4	3	2	5	9	1	0	1	0	0	1	0	0	10-3	2-1	0	2.10
Feb 09	vs San Diego State	7.0	8	2	2	2	4	2	0	1	0	0	0	0	0	3-2	3-1	0	2.07
Feb 10	vs Florida	7.0	9	14	10	10	7	2	0	4	0	1	2	0	0	3-14	3-2	0	3.71
Totals		34.0	29	24	18	23	37	7	0	7	1	1	3	0	0	21-24	3-2	0	3.71

2013 Arizona Softball
Games Summary for Arizona (as of Feb 13, 2013)
(All games)

Score by innings	1	2	3	4	5	6	7	Total
Arizona	0	1	3	6	4	5	2	21
Opponents	5	2	2	0	5	4	6	24

Record when ...

Overall	3-2	After 4 leading	2-0
Conference	0-0 trailing	0-1
Non-Conference	3-2 tied	1-1
Home games	0-0	After 5 leading	2-0
Away games	0-0 trailing	0-2
Neutral site	3-2 tied	1-0
Day games	3-2	After 6 leading	2-0
Night games	0-0 trailing	0-2
vs Left starter	1-0 tied	1-0
vs Right starter	2-2		
1-Run games	2-1	Hit 0 home runs	1-1
2-Run games	0-0	... 1 home run	1-1
5+Run games	1-1	... 2+ home runs	1-0
Extra innings	0-0		
Shutouts	0-0	Opponent 0 home runs	0-1
	 1 home run	3-0
Scoring 0-2 runs	0-1 2+ HRs	0-1
..... 3-5 runs	2-1		
..... 6-9 runs	0-0	Made 0 errors	1-0
..... 10+ runs	1-0	... 1 error	2-0
		... 2+ errors	0-2
Opponent 0-2 runs	1-1		
..... 3-5 runs	2-0	Opp. made 0 errors	1-1
..... 6-9 runs	0-0 1 error	1-0
..... 10+ runs	0-1 2+ errors	1-1
Scored in 1st inning	0-0	Out-hit opponent	2-1
Opp. scored in 1st	0-1	Out-hit by opponent	1-1
Scores first	1-1	Hits are tied	0-0
Opp. scores first	2-1		

Record when team scores:

Runs	0	1	2	3	4	5	6	7	8	9	10+
W-L	0-0	0-1	0-0	1-1	1-0	0-0	0-0	0-0	0-0	0-0	1-0

Record when opponent scores:

Runs	0	1	2	3	4	5	6	7	8	9	10+
W-L	0-0	0-0	1-1	2-0	0-0	0-0	0-0	0-0	0-0	0-0	0-1

Record when leading after:

Inn.	1	2	3	4	5	6
W-L	0-0	0-0	1-0	2-0	2-0	2-0

Record when trailing after:

Inn.	1	2	3	4	5	6
W-L	0-1	1-1	0-1	0-1	0-2	0-2

Record when tied after:

Inn.	1	2	3	4	5	6
W-L	3-1	2-1	2-1	1-1	1-0	1-0

Current losing streak: 1
 Longest winning streak: 3
 Longest losing streak: 1

Home attendance : 0 (0 dates avg = 0)
 Away attendance : 1771 (5 dates avg = 354)
 Total attendance: 1771 (5 dates avg = 354)